

Out of Reach  
MERRY CHRISTMAS

12.85.



A  
HAPPY NEW YEAR

Handwritten text, likely a letter or document, written in cursive script. The text is faint and difficult to read due to the quality of the scan. It appears to be a personal communication, possibly a letter, given the informal nature of the handwriting and the presence of what might be a signature or name at the bottom.

# OUT OF REACH

## REACH COMMUNITY MAGAZINE

Issue No. 105

E D I T O R I A L

December 1985

This is a combined issue for December and January. Twice a year we combine issues in order to make less work for the ladies who do the duplicating. So July and August and December and January issues are now combined. (Previously we used to have skeleton issues) I hope that those people with January news gave it in in time, as I did give you an advance reminder last month.

Once again I must make an appeal for anyone in the village who can type and can spare about 2 hours every 3 or 4 months. We were unable to replace the last typist who left, despite appeals, and another typist from the team will be leaving shortly, which brings the team down to 2 typists only. A village magazine such as ours can only survive if it has a team of willing voluntary workers, so I hope that someone, maybe who at present does not serve the village in any other capacity, will come forward.

Now for some dates of Christmas events in the village this year. The annual Whist Drive for the hospitals is on Friday 13th December and the Senior Citizen's Christmas Dinner is on Wednesday 18th December at 6.00p.m. The Children's Christmas Party is on Saturday 21st December at 3.00p.m. On Monday 23rd December there will be carol singing around the village, this year in aid of Cancer Research. We will meet at 6.30p.m. outside the Village Centre and anyone is welcome to come along and swell the numbers. I find it incredible that Christmas is so close once again, it seems to creep up on us quicker each year.

I would like to welcome to the village Mr and Mrs Barrett of Burwell Road, who moved in some weeks ago and I omitted to mention them then.

Finally I have to close on a sad note this month. I am sure that you will all be very sorry to hear of the death of Derrick "Nobby" Harrison who lived at 4 The Hythe until a few years ago. He had lived in the village for many years and even after his move to Burwell was still a familiar figure around the village on his bike with a cheery word for

everyone. I would like to extend sympathy to all members of his family both in Reach and Burwell.

May I wish everyone a very Happy Christmas and hope that 1986 will be a peaceful and profitable year for all.

Kay Pote

\*\*\*\*\*

Thanks to everyone who supported the N.S.P.C.C.

toy and book sale in any way. £128.28 was raised.

B. Ashley

\*\*\*\*\*

#### DEAF CHILDREN NEED YOUR OLD KEYS

This year's Blue Peter Appeal is to help deaf children. The aim is to provide 10 radio-controlled hearing aids, which cost about £500 each and to set up a 'lending library' of different types of hearing aids so that children can try out different types of hearing aids to see which ones suit them best and also to provide a temporary replacement if a hearing aid has to be sent away for repair.

To finance all this we need any old keys that you have, or any pre decimal money or any foreign coins. You will find a box for them in the Village Shop.

Many thanks, Freda Lloyd

\*\*\*\*\*

#### STAINED HUNDRED

The Stained Hundred Local History Society will be visiting the Cambridge and County Folk Museum on Wednesday, December 11th. The Curator, Mr. Tom Doig, has arranged for the Museum to be open especially for our evening visit. Meet at the Museum, 2 Castle Street at 7.30p.m.

\*\*\*\*\*



# PRINTING

*Good Quality Printing at Competitive Prices*

**D. A. NUNN**

(PRINTING)

402 AUREOLE WALK,  
STUDLANDS PARK,  
NEWMARKET,  
SUFFOLK, CB8 7BB.

Tel: NEWMARKET 665081

NCR Carbonless sets

- \* Dance & Disco Tickets
- \* Invitation Cards
- \* Personal Stationery
- \* Wedding Stationery

Posters

- \* Business Cards
- \* Labels
- \* Compliment Slips
- \* Billheads \* Menus

Artwork, Design & Advertising etc.



Invoices & Business Stationery

FOR DAILY DELIVERIES OF ALL NEWSPAPERS

**L. R. BRIDGEMAN**  
NEWSAGENT

4 CHAPEL LANE,  
REACH, CAMBRIDGE.  
CB5 0JJ

TELEPHONE : NEWMARKET 741129

WEEKLIES

JOURNALS

AND

MAGAZINES

Which bike do I choose?



Bikes for all at

Tel: Newmarket 742753

**William Hunter**

your **LOCAL** cycle dealer

LOCAL for SPARES

SERVICE & ACCESSORIES

51 NORTH STREET, BUTWELL.



# MANCHETTS (Burwell) LTD.

USED CARS  
ALWAYS IN STOCK.

MOTOR ENGINEERS.

ALL MAKES OF NEW CARS  
SUPPLIED

PARTS &  
ACCESSORIES.

NESS ROAD GARAGE  
BURWELL - CAMBS.

Tel : Newmarket 741228



EAR PIERCING  
LADIES' - GENT'S HAIRSTYLISTS

*Lynda Ann*  
*Mr. David*

618, Newmarket Road, Cambridge.

Tel : Cambridge 241395

## JOHN REED - Landscape Gardener

9 m  
(30 ft.)

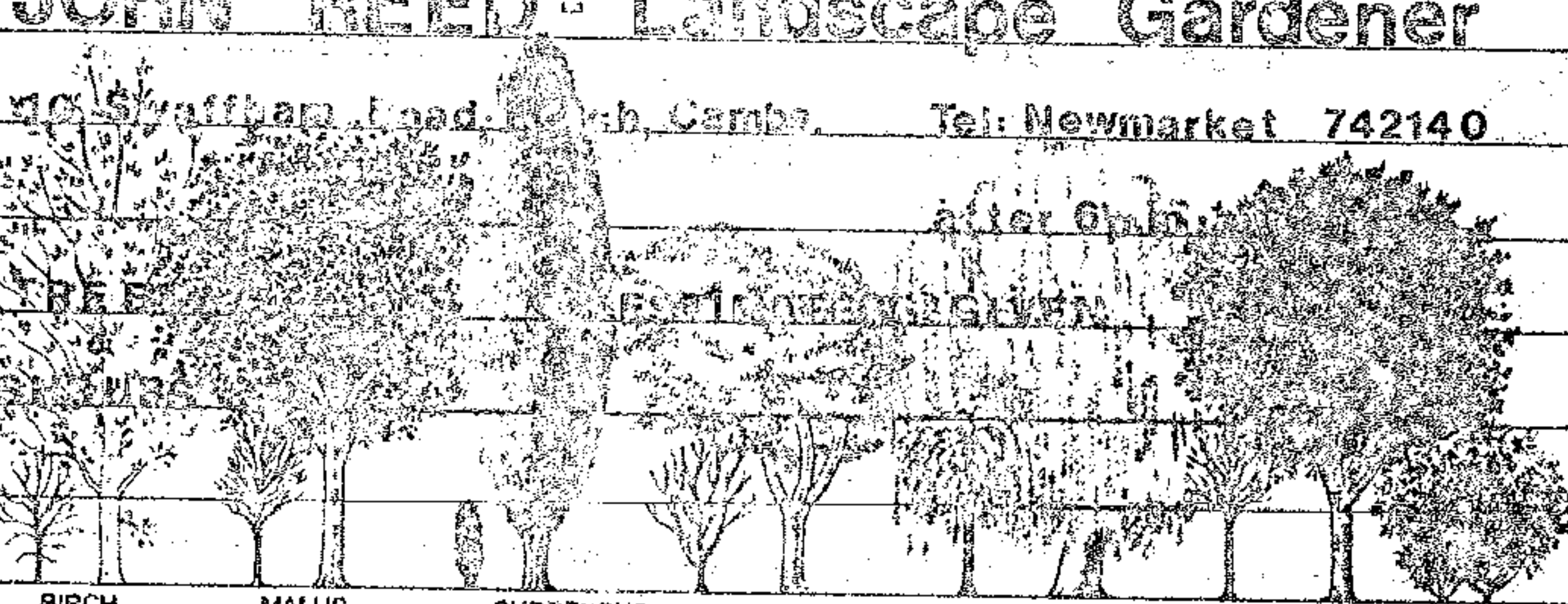
7.5 m  
(25 ft.)

6 m  
(20 ft.)

4.5 m  
(15 ft.)

3 m  
(10 ft.)

1.5 m  
(5 ft.)



BIRCH

MALUS

CUPRESSUS

ACER

WILLOW

PRUNUS RHODODENDRON

Tel: Newmarket 742140

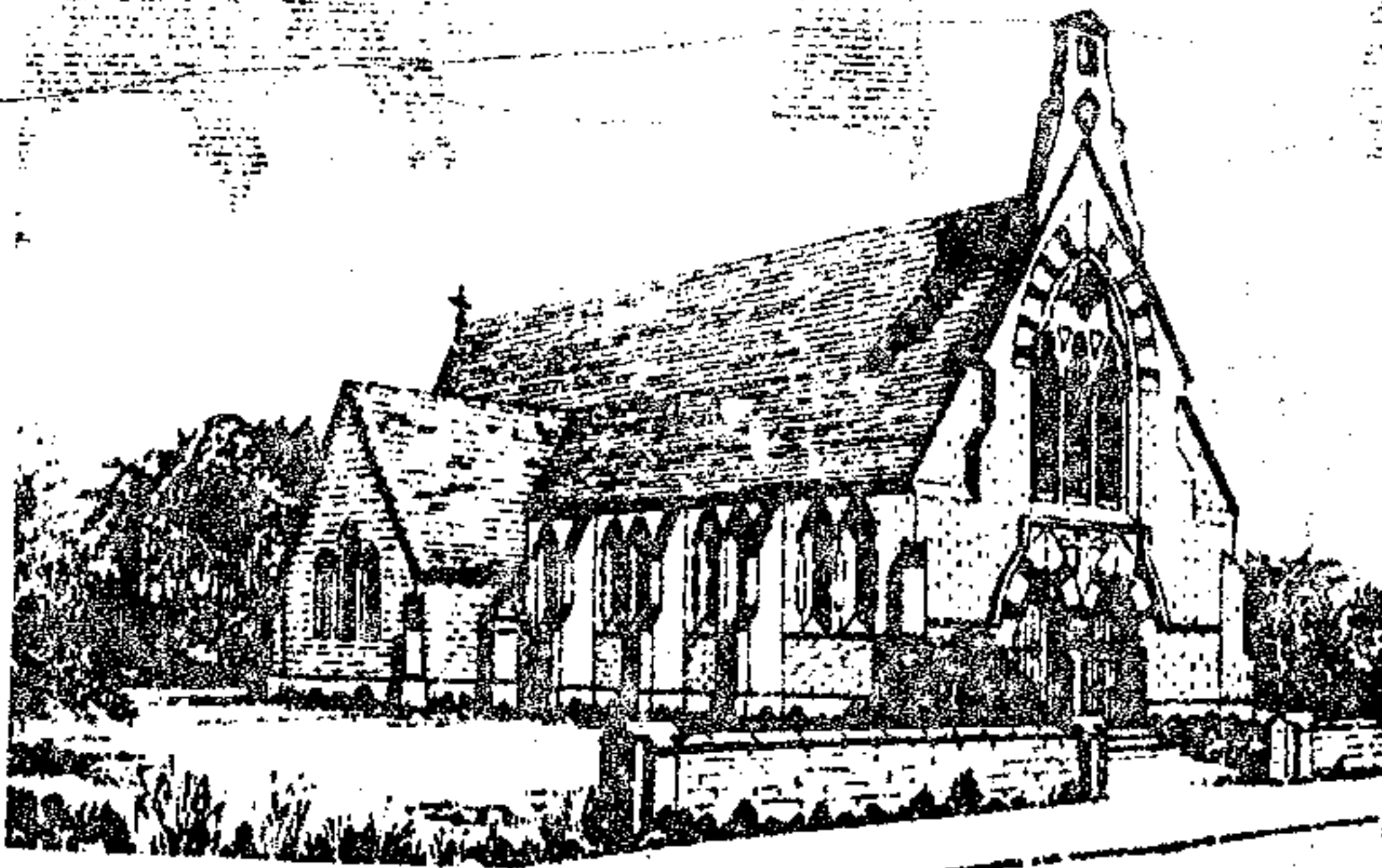
Patios

Lawns

Fencing

Tree surgery.

Pruning



*St. Etheldreda  
and the Holy Trinity*  
*Reach*

**FROM THE VICAR**

As the miracle of Christmas comes in sight once more, I think we might do worse than ask ourselves what it really means; or, if this is too ambitious, - since the thing is so huge, - at least try to be clear what it means to us, for we all have to start somewhere. We are educated by illusions, in Christian things as much as in others. We learn by mistakes. We learn what God is by slowly discovering he is not what we had hitherto thought he was; and what Christ is and does, similarly. And the marvel is so unfathomable is the mind of God, that this process of learning is endless. He may be reached, even touched, by love, never taped by the mind.

And all growth in the understanding of his mind is growth in simplicity, for it is the intensity of the simplicities of Christmas which makes us catch our breath and think again. Rude things have been said about the New English translation of the Bible; yet it contains a sentence of breath-taking beauty, in a brief personal letter of St Paul to his friend Titus (chapter 2, verse 11), which tells us at least half the story: 'the grace of God has dawned upon the world with healing for all mankind'. The other half of the tale is that this particular dawn first broke over Bethlehem, in the birth of a child named Jesus (meaning Saviour), descended from King David, no less, and later named Christ (anointed), i.e., anointed by God for his work as Saviour.

But our notions of God have become coloured, to the point of distortion, by our notions of power. So that it is good for us to retrace this story from its outset, but holding on doggedly to the sense of what one might call the powerlessness of Christ. Looked at from this angle, you see how rigorously, in his plan of saving our world, the Lord God see to it that his Son is born totally without privilege, i.e., any power deriving from this world. His very birth is so obscure it has to be searched for, indeed pointed out to, strange witnesses, shepherds and Wise Men. To squeeze into our world 'he made himself nothing'.

And his later life steers the same course: a hard life as a housebuilder, and probably, in bad times, a fisherman, too. And when at last he feels the inner compulsion of the Spirit to leave home and begin his preaching of the coming Kingdom, his only weapons, apart from sheer physical toughness and shrewdness, are innocence and a total grasp of Israel's scriptures (our Old Testament).



And yet with these he carved a path through our world which changed its course for ever. He seized on a prophecy from the late 6th century B.C. to explain his mission: 'to bring good tidings to the afflicted, to bind up the broken-hearted, to proclaim liberty to the captives and the opening of the prison to them that are bound; to proclaim the year of the Lord's favour'. With this manifesto in mind he made a bee-line for the afflicted, in spirit, in heart, in body, and, provided they would trust him, gave them relief beyond their dreams, and on a scale which not only astounded but in the end appalled the rulers of Israel. His mercy was anarchic, too indiscriminate, too ferociously on the side of the broken and the lost, yet at the same time unmistakably critical and condemnatory of themselves, most of whom couldn't grasp the message - that the healing of the coming kingdom was already in their midst for all who could love and repent, repent and love, and wanted to love more.

But he wouldn't change course; and in the end they suppressed him. Yet he rose in the power and lightness of his original innocence, and comes back to us now with the same healing in his wings, to every broken spirit, using every available channel, from the bread broken on the altar to the infant teacher comforting her babes. 'The grace, the loving-kindness, of God, has dawned upon the world'. Existence, if you plumb it to its depths, is friendly, not hostile, health-giving not destructive, inexhaustibly good, coming as it does directly from his compassionate heart.

So may I, in these terms, wish you a Happy Christmas, and maybe the chance to pass on the strange secret, from heart to heart, to those who are defeated.

J.K.B.

\*\*\*\*\*

#### CAROL SERVICE

SUNDAY DECEMBER 22nd at 3.30p.m. in church followed by tea and mince pies. It has been suggested that children might bring a used toy for Sue Ryder homes.

The Sunday School meets at 10.30 - 11.00a.m. every Sunday except the 3rd Sunday in the month, when there is a short Morning Prayer which the children attend. A warm welcome to all.

M. Whitehead      A. Fuller

\*\*\*\*\*



FROM THE CHURCHES

Worship in December: St. Mary's and Reach:

- 1st ADVENT SUNDAY  
8.00a.m. Holy Communion (Reach)  
9.30a.m. Matins & Eucharist (St Mary's)  
6.30p.m. Evensong (Reach)
- 8th ADVENT II  
9.30a.m. Parish Communion (St Mary's)  
11.00a.m. Family Communion (Reach)  
6.30p.m. Evensong (St Mary's)
- 15th ADVENT III  
9.30a.m. Parish Communion (St Mary's)  
11.00a.m. Children's Service (Reach)  
6.30p.m. Evensong (St Mary's)
- 21st S. THOMAS  
8.00a.m. Holy Communion (St Mary's)
- 22nd ADVENT IV  
9.30a.m. Parish Communion  
11.00a.m. Children's Eucharist (Reach)  
3.30p.m. Carol Service and mince pies (Reach)  
5.00p.m. Evensong (St Mary's)  
6.30p.m. United Village Carol Service (Zion Chapel)
- 24th CHRISTMAS EVE  
11.30p.m. Midnight Mass (St Mary's)
- 25th CHRISTMAS DAY  
8.30a.m. Holy Communion (Reach)  
10.00a.m. Children's Eucharist (St Mary's)  
4.00p.m. Evensong (St Mary's)
- 26th S. STEPHEN, first martyr  
10.00a.m. Holy Communion (St Mary's)
- 27th S. JOHN the EVANGELIST  
8.00a.m. Holy Communion (St Mary's)
- 28th The HOLY INNOCENTS  
8.00a.m. Holy Communion (St Mary's)
- 29th CHRISTMAS I  
9.30a.m. Parish Communion (St Mary's)  
11.00a.m. Family Communion (Reach)  
6.30p.m. Evensong (St Mary's)

FROM THE REGISTERS:

Burial 30th October: Elizabeth Melinda Ling, formerly of 1 Station Cottages, aged 85

Baptism Amy Jane, daughter of Roland Lewis and Glynis Yvonne Folkes  
28 Swaffham Road, 17th November

\*\*\*\*\*

COUNTY COUNCIL NOTES

Some of you may have seen the headline in the Cambridge Evening News of November 9th, indicating a possible 30% rise in rates.

May I explain: -

First of all, the present administration believes it is inevitable that rates will go up 20% or a fifth for the following reasons: -

- 1) The previous Council rated last February for 4½m. less than they planned to spend. The gap was filled from the reserves and that can hardly be repeated especially when you consider: -
- 2) The previous Council assumed 4½% inflation. We all know this to have been too low, Present unconfirmed estimates indicate 6-7% (remember, Manual Workers got 8.4%) shortfall of, say, 3½m.
- 3) We must allow for inflation next year. Perhaps 6% (?) What will the Teachers get? It must be about 7%, surely?
- 4) We know the Government will cut its grant to all local authorities for the sixth year running. We shall not know until Christmas by how much. It would be prudent to assume £4 to £5m. for Cambridgeshire.

All the above calculations come to about 20%, assuming a budget broadly following the previous Council's spending policy.

What I want to consider next is the new proposals over and above last year's level of services. The Alliance Administration is suggesting what we hope; you will agree is a moderate balanced bid of between 2½ and 3% (say £5½m.) What will it be spent on? Can I give you a flavour? It is not a comprehensive list and until after the February 1986 Council budget meeting only a series of proposals.

SOCIAL SERVICES

Home help and day care - a flat rate of £1.50/week, no matter how much aid is NEEDED, For the over 85s who need social service help - nothing to pay.

No charges for Orange handicap badges

Cabinet Making & Custom Built Furniture  
Renovations & Upholstery Specialists  
Antiques & High Quality Reproduction Furniture  
French Polishing  
Furniture Repairs

★ Consult your  
local experts ★



Shop:  
13 High Street, Newmarket.  
Telephone: Newmarket 662958

**Dudley's Home Interiors**  
incorporating  
**Country Antiques**



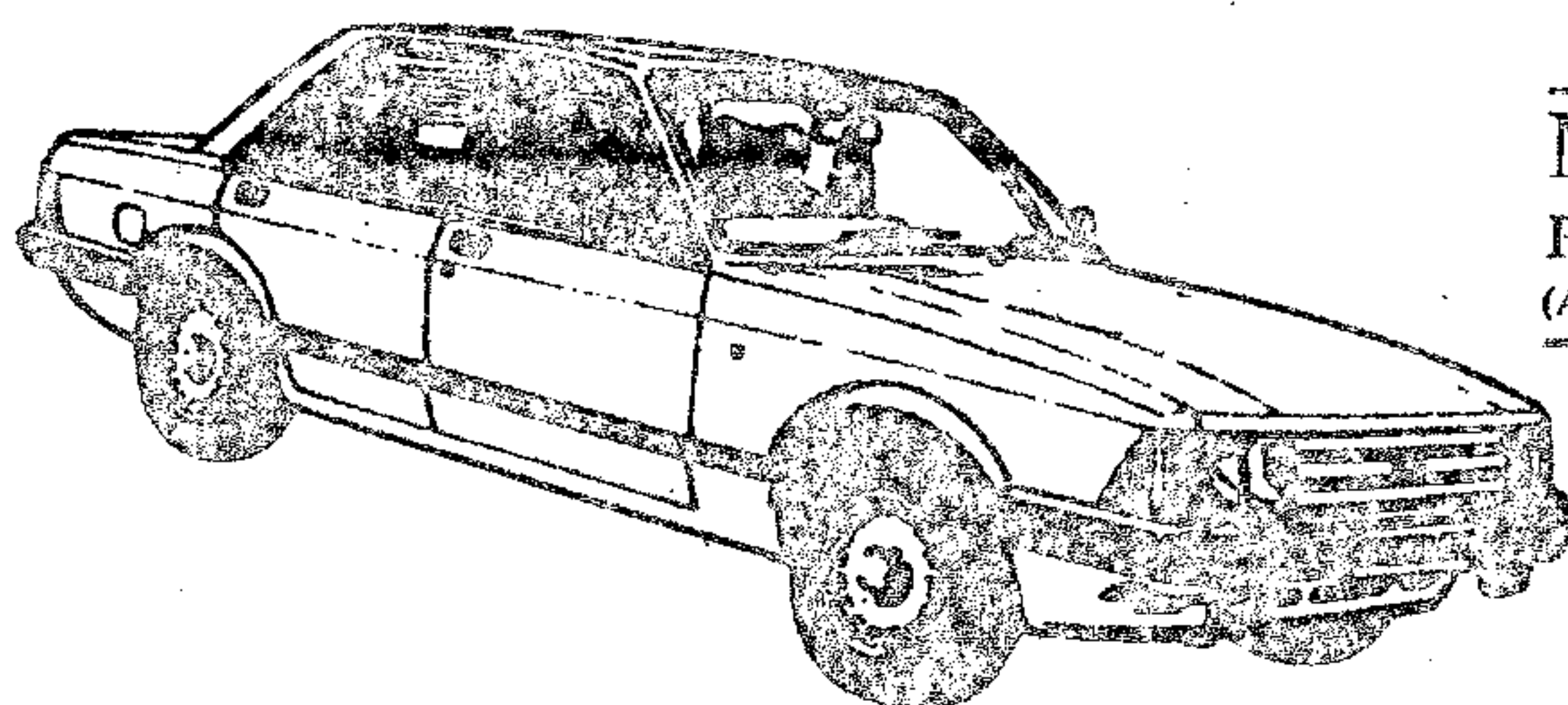
Leisure  
Services



Spa & Turkish Baths  
Swimming Pools  
Chemicals  
Saunas & Sunbeds  
Jacuzzi

Try them, hire them or buy them.

Office & Workshop:  
Vine House, Reach.  
Telephone: Newmarket 741989 (24 hrs)



TONY MUMFORD'S

**NEWMARKET EXPRESS**

PRIVATE CAR HIRE WITH DRIVER  
(AIRPORTS . WEDDINGS . TOURS . ANY OCCASION)

ANYWHERE - ANYTIME - ANY PLACE

Also Light Removals & Parcel Service

VERY ATTRACTIVE RATES

Tel: NEWMARKET 67551 or 4068

LOCAL FRESH

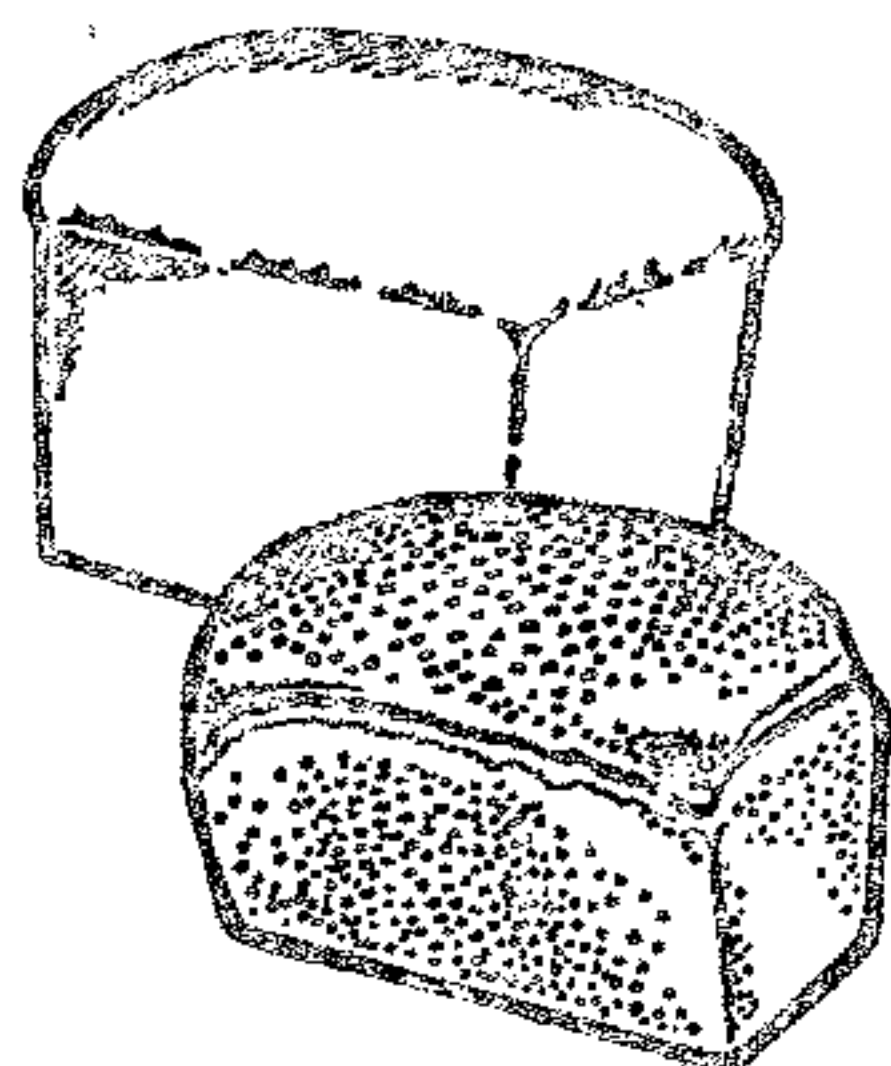
O.K. MYNOTT

Tel: 741259

BREAD & CAKES

Open Sundays

10.00a.m. till noon



**REACH VILLAGE SHOP**

&

**POST OFFICE**

Cambridge  
**Evening News**

Groceries

Provisions

Fruit



**Mace**

Lane's bread and cakes + first rate fruit and  
vegetables available from

**BURWELL VILLAGE STORE**

**'Mike's Mace'**

**741575**

Open during the lunch hour. Filled rolls available.  
Phoned orders welcome.

**NEW**

**P. J. BECKETT**



**SHOE REPAIRS**

HIGH CLASS REPAIRS  
BOOTS, SHOES  
AND SURGICAL REPAIRS

**TRAINING SHOES**

LADIES' & GENTLEMEN'S  
CARPET SLIPPERS  
CHILDREN'S SHOES

SATISFACTION GUARANTEED

48 THE CAUSEWAY, BURWELL

Tel. Newmarket (0638) 720602

(Evenings only)



HERBS AND SPICES

CULINARY AND MEDICINAL HERBS

TEA, COSMETICS AND PRESERVES

WIDE SELECTION AVAILABLE.

TELE: Newmarket 741516

PROPERTY REPAIRS  
ALTERATIONS • RENOVATIONS  
OLDER PROPERTY A SPECIALITY

*Any Job Undertaken - Free Estimates*

Ring **RON GREENHILL**  
Newmarket 742705

## WHAT'S ON AT THE CAMBRIDGE ARTS THEATRE

December 2nd - 7th at 8.00p.m. Airbase by Malcom McKay

Christmas Craft Fair December 3rd - 7th and 11th - 14th 10 - 5.00p.m.

December 10th - 14th Hans Anderson - a fairytale musical

December 19th - 11th January Aladdin

-- 0 --

Mayflower Folk Club The Geldart, Sleaford Street, Cambridge. Tuesdays 8.30p.m.

Golden Hind Folk Club Golden Hind, Milton Road. Fridays 8.30p.m.

Mildenhall Folk Club White Hart, High Street. Alternate Fridays

December 6th, 20th, January 3rd, 17th, 31st.

Wicken Hall Alternate Sundays - see notice in shop. December 1st, 15th  
29th, January 12th, 26th.

## VILLAGE CLUBS

Mondays - Youth Club 7.30 - 10.00p.m.

Tuesdays - Bingo 7.30 - 9.30p.m.

Wednesdays - Mother and Toddlers 10.00 - 12.00a.m.

Thursdays - Jazz Ballet 8.00 - 9.30p.m.

\*\*\*\*\*

## COMMUNITY ASSOCIATION

You will no doubt have individually received a copy of the notice circulated on 8th November, informing every household in the catchment area of the need for the formation of a Community Association and explaining its basic principles.

The essential need for one has been recognised and following a full Governors meeting, a sub committee was set up to bring about the formation and structuring of such an association. As a follow up to the initial notice, this letter is to officially ask your committee, Institute or group to select a representative to attend a meeting on MONDAY 2nd DECEMBER in the SCHOOL at 8.00p.m.

The need for such an association is not in doubt and this meeting will be one where it can be formally established and where a basic constitution can be discussed.

It is essential that all bodies are represented, and I would ask that this letter be read out at your next meeting or gathering so that a person can be nominated as a representative to attend this important meeting.

Harvey R. Harrison  
Chairman of Governors

## COUNTY COUNCIL NOTES CONTD.

Charges down to 75p for Meals on Wheels

More help for the overworked staff in old people's homes; old people are living longer and need more care. Money for modernisation of these homes. Do you know how many staircases there are at The Grove, Fordham, for instance? It's like a switchback - even I get tired and both my legs are still working.

Money is proposed to pay for more care staff in sheltered housing for the elderly. We surely owe our old relatives a slightly more comfortable last few years.

Improvements for handicapped folk in homes need money and I believe you will be equally sympathetic.

### EDUCATION

Permanent buildings to replace mobiles, more text books, higher standards of cleaning and maintenance, providing for children with special needs, more training for teachers, increased technical support (more auxiliaries that means) and community education - all costs money.

### TRANSPORT

The aim is to turn towards cost-effective small-scale improvements including pothole repairs in roads and footpath and street cleaning and some road safety measures. For instance, I am still persuing a cycle/footway down Lode Road, Bottisham, so I won't lose sight of that project.

### SUMMARY

All the above costs money. As I indicated earlier in this article, the money required is not overwhelming. At this stage the proposals are just that. I would be most interested in your views. We did say we would consult you!

James Fitch  
County Councillor

\*\*\*\*\*

THE SUM COLLECTED FOR THE POPPY APPEAL WAS £62.19

(including the Church collection)

\*\*\*\*\*



XX  
Welcome to **THE KINGS**

a family run FREE HOUSE in REACH -  
serving best quality food and beer  
in warm, cosy surroundings.

Small parties catered for - birthdays,  
anniversaries, etc.

TELEPHONE NEWMARKET 741745  
XX



## Heatwave D I Y

Building materials Decorating requisites  
Electrical fittings Fixings — nails, screws, nuts and  
bolts, insulation Plumbing and Heating fittings



Open: Monday-Saturday 8.00 am-5.00 pm

Newnham Lane Burwell Telephone Newmarket 741701

Maintenance • Service  
Plumbing • Heating



Newmarket (0638) **741701**  
**24 HOUR SERVICE**

— Specialist Plumbing Heating and Electrical Engineers  
Maintenance • Luxury Bathrooms • Water Treatment Service

**Henry Hardiment (M & E Services) Ltd**  
The Causeway, Burwell, Cambridge CB5 0DU

'Phone: NEWMARKET 741274

Member of the N.H.B. R.C.

**BUILDERS  
AND  
CONTRACTORS**

## **G. E. PALMER & SON**

REPAIRS OF  
EVERY DESCRIPTION

**NORTH STREET - BURWELL  
CAMBS.**

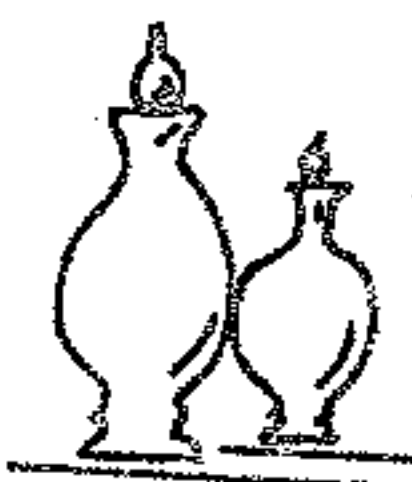
**WHEELWRIGHTS  
AND  
UNDERTAKERS**

## **BURWELL PHARMACY**

**CROSS & HERBERT LTD**  
Chemists

57 High St., Burwell  
Tel: Newm. 741214

Babycare, Beauty Aids  
Photography, Gardening  
Wines & Spirits



Also at  
8 The Rookery  
Newmarket  
Tel: Newm. 664917

& 1 PRAET ST.  
SOHAM  
TEL. ELY 720739

## **STEVE WEBB**

**PAINTER & DECORATOR GLAZIER**

**(APPRENTICESHIP SERVED)**

**FREE ESTIMATES**

4 Priory Close,  
Burwell,  
Cambridge

Newmarket 742092

## **N. E. HARRISON**

**Plumbing, Heating and Welding**

*Free Estimates Given      Industrial Heating  
Kitchen and Bathroom Installations*

17 Newmarket Road,  
Burwell,  
Cambs. CB5 0AE

Tel. Newmarket 742873

## PARISH COUNCIL NEWS

The Precept for 1986 was decided on £650.

It has been brought to the notice of the Parish Council that dogs are fouling the footpaths in the Ditchfields area. Would dog owners please make sure that dogs are kept under control. There are plenty of open spaces around the village so there are no excuses for dog owners. Once again the bus shelters have been vandalised. Would the people concerned please refrain from damaging the village property.

The Deputy Head of Swaffham Prior School will be appointed Acting Head during the time that Mrs. Smith will take for maternity leave.

A Community Association Committee will be formed in order to adhere to the rules of the recent Education revue. All Village Committees will be asked to send a representative to the meeting to be held on Monday 2nd December.

\*\*\*\*\*

### INDOOR CARPET BOWLS

What a month it has been for the club. Four league matches have been played since last months magazine went to print. We have also been getting some of our own club matches on the way.

S.P. 1 and S.P.2 played each other in a league match on October 15th and what a match it was, with S.P.2 winning by 5 - 3 in points.

On 25th October S.P.2 played at home against Rampton this match was a draw 4 - 4 points.

On 28th October S.P.1 played away against Wilburton this was also a draw 4 - 4 points.

On 12th November S.P.2 played away against Soham 1 and lost 5 - 3 points.

Our own club matches results mens singles going through to the second round, R. Folkes, B. Sheldrick, D. Mead, G. Lewis, M. Aves, A. Irons and M. Fox. In the ladies singles J. Lewis has had 2 wins. In the pairs through to the 2nd round to date are G. Lewis and C. Thompson, D. Mead and D. Folkes. In the Junior club Gemma Hardiment and Julian Fox have both won a match.

But possibly the best news this month is that we now have a new carpet to play on, kindly donated by the organisers of the Fenland Country Fair, for which we all say a big thank you. We are also pleased to say that we have had a number of new people coming to play bowls so the new carpet is even more appreciated.

On 8th December we are having a bowls drive when all our club members will be taking part and the winner will receive the Bob Laws Memorial Shield. This is our tribute to him for the fine work he did. This Shield will be played for each year.

David Folkes



## THIS MONTH'S RECIPE

Two ideas for using up left over turkey....

### HOT MEXICANO TURKEY

1 tablespoon cooking oil  
1 onion, peeled and sliced  
12oz cooked cold turkey, cut into chunks  
14oz tin tomatoes  
14oz tin baked beans  
1/2 pint stock  
5 fl. oz. natural yoghurt  
1/2 teaspoon chilli powder  
1/2 teaspoon ginger  
1/2 teaspoon garlic powder or granules  
ground black pepper

Fry onions in a large saucepan in the oil until soft. Stir in all the remaining ingredients except yoghurt. Cover and simmer gently for 20 minutes. Stir in the yoghurt in swirls at the end of cooking time. Serve with jacket potatoes or crusty bread. Do not reheat or freeze.

### STIR FRY TURKEY

4oz butter  
15oz tin pineapple pieces  
14oz tin beanshoots (or fresh if available)  
1 red and 1 green pepper, deseeded and thinly sliced  
4oz mushrooms, wiped and thinly sliced  
4oz celery, thinly sliced  
12oz cooked turkey, cut into thin strips  
1 onion

Melt butter in frying pan or wok. Drain pineapple pieces and reserve juice. Drain beanshoots (discard liquid). Add pineapple pieces, beanshoots, peppers, mushrooms, celery, turkey and chopped onion to pan. Fry quickly, stirring until turkey is hot. Make up a sauce using:

1oz cornflour  
2 tablespoons soy sauce  
2 tablespoons clear honey  
1/2 teaspoon ground ginger  
1/2 teaspoon garlic powder or granules  
ground black pepper  
Almond flakes for garnish if required.

Blend cornflour with the pineapple juice, soy sauce, honey, ginger, garlic and black pepper. Pour over the mixture in the pan and bring to boil stirring. Add salt if required. Serve immediately while vegetables are crisp and crunchy. Serve with boiled rice. You may vary the vegetables used as you wish.

\*\*\*\*\*

YOUR FAMILY BUTCHER  
**A. W. R. ELLWOOD**

31 High Street, Burwell.

Telephone: Newmarket 741323

English Beef — Pork — Lamb  
Best Pork Sausage

Fresh Chicken for Every Weekend

# SPOTLYTE DISCO SHOW

for

WEDDINGS, PARTIES AND ALL OTHER OCCASIONS  
(All ages catered for)

TELEPHONE: **GRAHAM** Newmarket 741342

J A N E N E W B U R Y A.I.S.T.D. C.S.B.

(Trained by the Royal Ballet)

DANCE CLASSES for children from 2½ years old in the CHURCH HALL  
on Friday afternoons

* Nursery Movement	:	2.45 p.m. - 3.15 p.m.	*
* Junior Ballet	:	3.30 p.m. - 4.00 p.m.	*
* Junior Modern Dance	:	4.00 p.m. - 4.30 p.m.	*
* Intermediate Ballet	:	4.30 p.m. - 5.00 p.m.	*
* Senior Modern Dance	:	5.00 p.m. - 5.30 p.m.	*
* Senior Ballet	:	5.30 p.m. - 6.15 p.m.	*

**S.BULBECK**

Further details from 117 High Street, S.Bulbeck or phone: Cambridge 812154



Fenway Television Ltd.

105 The Causeway  
Burwell  
Tel: Newm. 741444



TV - Hi Fi - Video  
Music Centre  
Radio Cass.  
Watches

Efficient After Sales Service  
by our Professional  
Engineers

Calculators  
TV Games  
Aerials

Open 9 am - 6 pm  
Except Wednesday

**Quality products**  
**Rock bottom rentals**

SONY  
TECHNICS  
I.T.T.



TRADITIONAL  
THATCH SPECIALISTS

**Neeves  
Bros**

Dolphin Cottage, The Hythe,  
Reach, Cambridge CB5 0JQ

Telephone: 0638 - 742519/669233

**R.B. GILLIES**  
COAL AND COKE MERCHANT



BULBECK  
77, Road Road,  
Cambridge  
Tel: Cambridge 243371

For REGULAR DELIVERIES  
of all types of household  
fuel. Telephone orders welcome  
up to 9 p.m.

**Mace**

The Village Stores  
Swaffham Bulbeck  
Cambridge 811354

for

FAST FREE DELIVERIES

from your Authorised LOCAL stockist

NEW APPLIANCES

**CALOR Gas**

HEATER SERVICE AND REPAIR